



COSTAS MICHAELIDES LTD
MARBLE , GRANITE AND LIMESTONE FACTORY

THE LIMESTONE EDITION

About Us

COSTAS MICHAELIDES LTD quarries and processes Limassol Stone in great quantities and is also one of the leading firms in Cyprus importing and processing top-quality marble, granite, quartz surface and onyx.

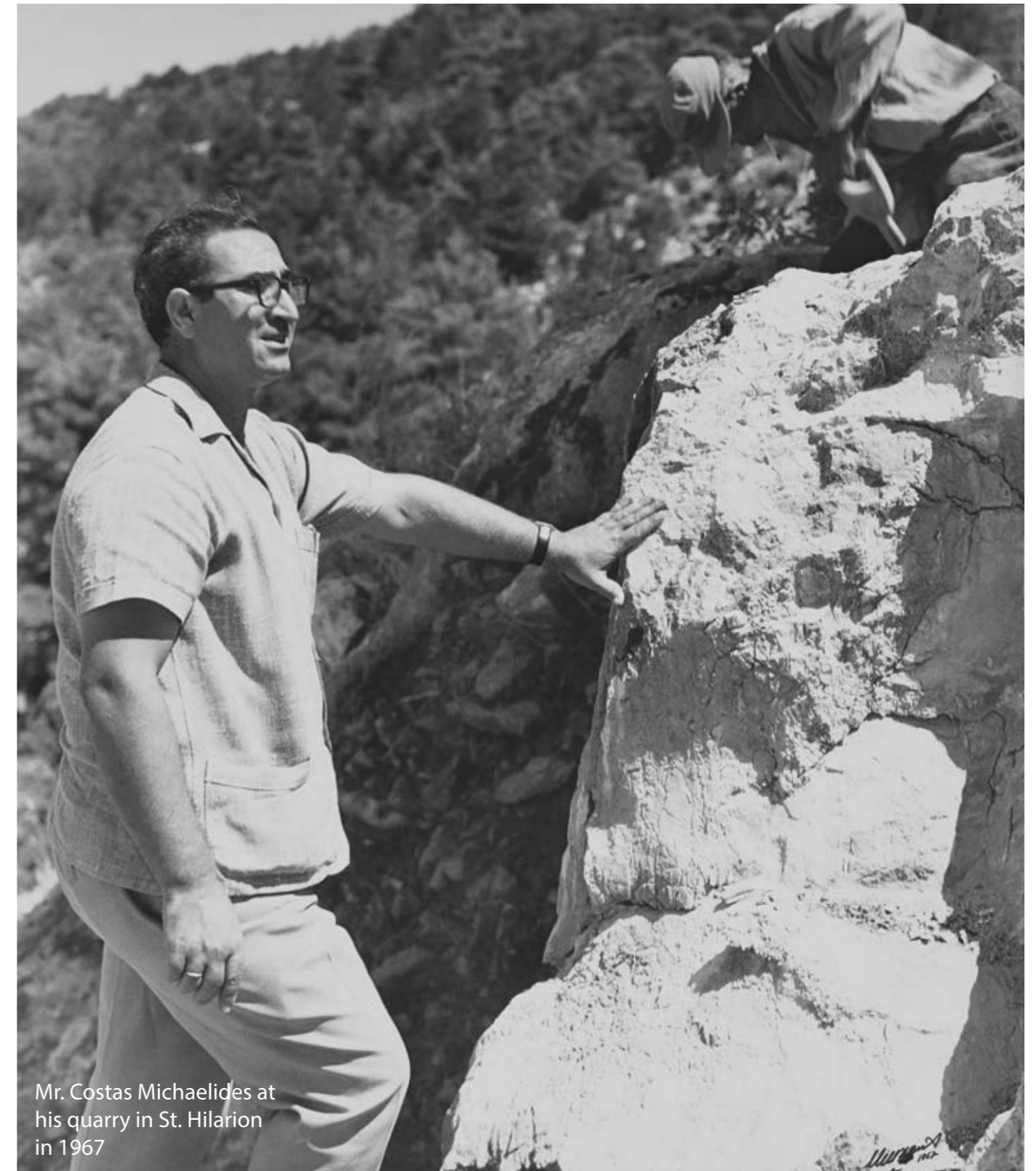
The company was created in 1948 and has shown an excellent development since then. Nowadays, COSTAS MICHAELIDES LTD is considered to be one of the most experienced companies in its sector, perfectly organized and well-equipped with high-technology machinery.

Our Connection to the Limassol Stone

The history of Limassol Stone goes as far back as 3000 years. Ancient monuments such as the Curium theatre, the Limassol Castle and the Kolossi Castle, are furnished by this stone and are reserved in excellent condition until today.

During the 1970s, the Company's founder, Mr. Costas Michaelides, was the first to introduce the natural stone again into the domestic construction industry, and to thereby connect the past, with the present and future. As a result, the Construction Industry of Cyprus was enriched with a durable material of superb aesthetic qualities and convenient use.

Today, the company owns several limestone quarries, mainly in the Greater Area of Pachna, and exports the Limassol Stone to countries all over the world.



Mr. Costas Michaelides at his quarry in St. Hilarion in 1967

Technical Specifications

This type of stone is a massive fine-grained calcarenite with a holocrystalline texture, consisting mainly of micro-crystalline calcite (92%) and mono-crystalline quartz (8%). It has a simple chemical composition, being made up mainly from calcium carbonate (CaCO₃ – 92%) and silica (SiO₂ – 8%).

Extensive laboratory investigations have shown that the Limassol Stone, apart from its aesthetically superb colorations which are enhanced as time goes by, it also has excellent natural properties which satisfy even the most demanding specifications in the construction industry.

This stone has a specific gravity of 2.11 which is considered to be relatively low. This specific gravity is 12% lower than that of concrete and the same as that of ceramic bricks.

PHYSICAL PROPERTY	RESULTS	INTERPRETATION
Absorption by weight, max, %	6,9	Low water absorption
Density, min, lb/ft ³	123,1	Low density stone
Compressive strength, min, psi	2862 (wet) 3546 (dry)	High compressive strength
Modulus of rapture, min, psi	525 (wet) 535 (dry)	Good modulus of rapture
Flexural strength, psi	1225 (wet) 1550 (dry)	Good flexural strength

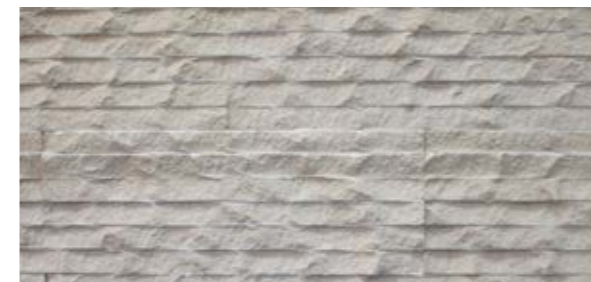
Types of Finish



Sandblasted



All Sides Beveled 1x1cm



Stripped Rough Surface – small pieces



Grooved 1x1cm



Stripped Rough Surface – large pieces



Rough surface – small pieces



Natural Split



Rough Surface – large pieces

Blocks, Slabs & Tiles

Using the latest machinery on the market, COSTAS MICHAELIDES LTD is able to quarry top-quality limestone in large blocks, which can be offered either in their original form or squared on three sides. In addition, the company also quarries smaller-sized blocks.

The limestone is also being processed at the company's factory, where it can be cut into slabs of any thickness, starting from 2cm. The company can also provide cut-to-size tiles in any dimension requested, i.e. 30x60cm, 60x60cm, 40x80cm etc.

Applications

Due to its high compressive strength, the Limassol Stone is very suitable for flooring and wall cladding. Also, its low water absorption, combined with its characteristic colour, make it most suitable for covering both interior and exterior areas.

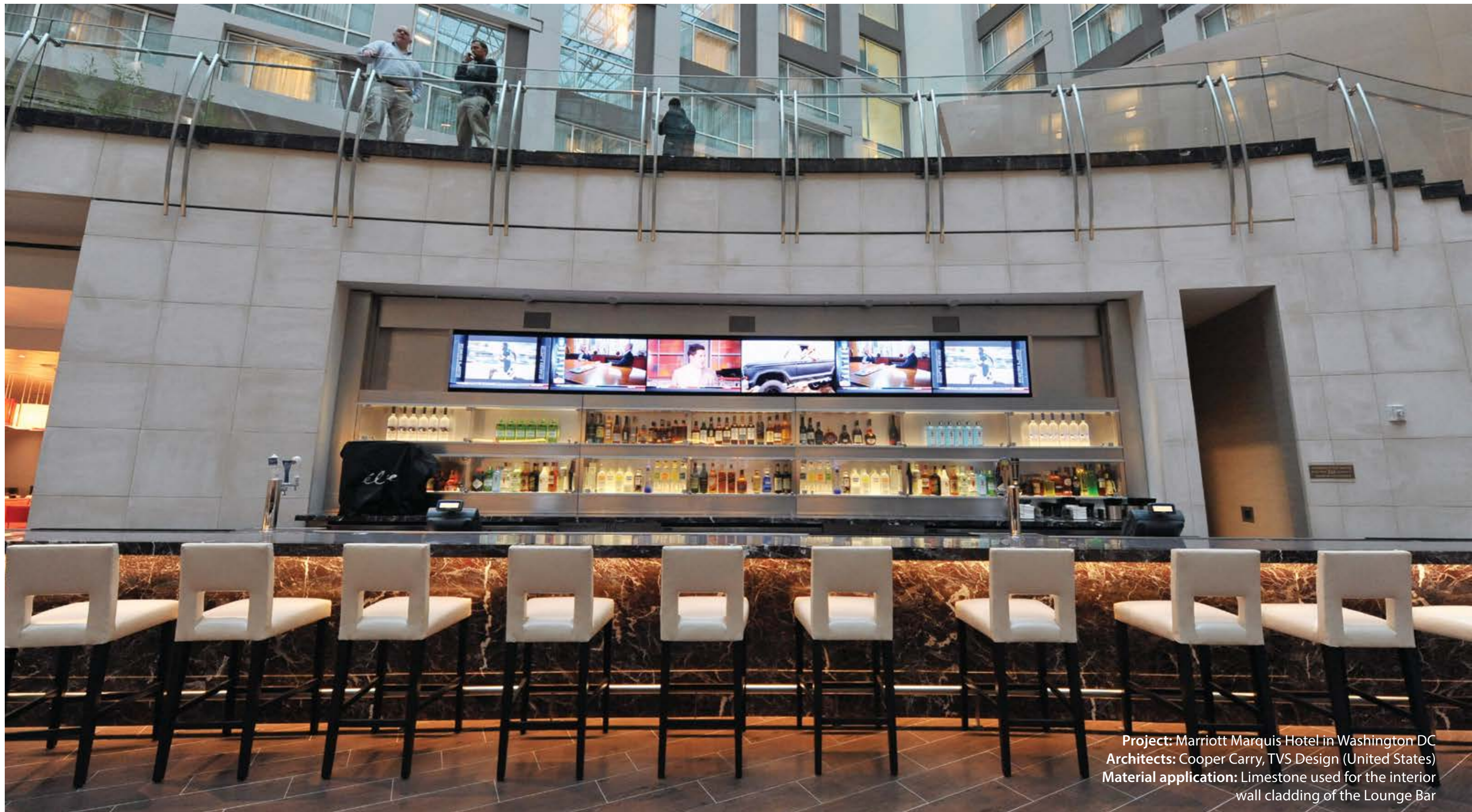
In addition this stone can also be used for swimming pool copings, window frames, crazy paving, steps and fireplaces.

Finally, the Limassol Stone can be provided in any 3D design, i.e. in the form of balustrades, column capitals, rain gutters, sculptures, etc.



Project: U.S. Embassy in Nicosia, Cyprus
Architects: Kohn Pedersen Fox Associates (United States)
Material application: Limestone used for the exterior wall cladding of the building





Project: Marriott Marquis Hotel in Washington DC
Architects: Cooper Carry, TVS Design (United States)
Material application: Limestone used for the interior wall cladding of the Lounge Bar

Project: Administration Building of the National Bank of Greece, in Athens
Architects: Mario Botta (Italy), Sakellaridou/ Pananikolaou (Greece)
Material application: Limestone of two different shades used on the exterior of the building





Project: Thetis Residences, Limassol Marina
Architects: Atelier Xavier Bohl (France)
Material application: Wall cladding from natural split limestone of 5cm thickness (Ground Floor) and limestone railings (Top Floors)

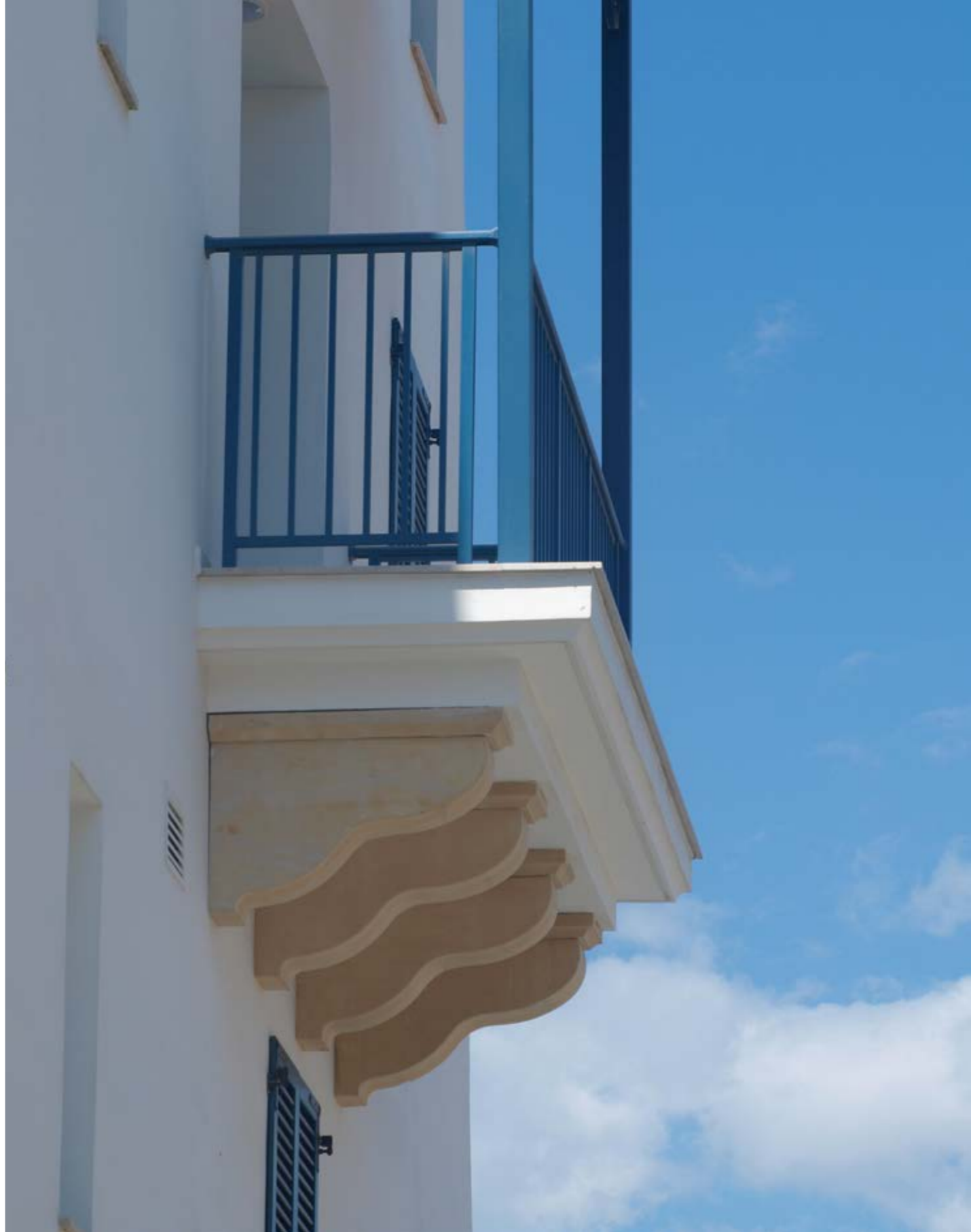








LIMEGROVE
SPA & FITNESS





Contact Us

Office Address

Corner of Dafnis & 2 Delou Street
Ypsonas Industrial Area
3056, Limassol - Cyprus

Postal Address

Costas Michaelides LTD
P.O.Box 50598
3608, Limassol - Cyprus

Credits

Graphic Design & Layout

Anastazia Anastassiou

Photography Rights

Costas Michaelides at St. Hilarion © 1967 Michael Michael, Limassol, All rights reserved
U.S Embassy in Nicosia © 2006 Denis Gilbert, All rights reserved
Marriott Marquis Hotel © 2014 Joanne S. Lawton/Washington Business Journal, All rights reserved

facebook / CostasMichaelidesLTD

linkedin / CostasMichaelidesLTD



Since *1948*

www.costasmichaelidesstones.com

Telephones +357 25 392 198, +357 25 393 483
Fax +357 25 394 637 **Email** elepem@spidernet.com.cy